

More Than Hearing Worksheet

Episode: COrd4x2019

Texts: [Jeremiah 1:4-10](#) • [Psalm 71:1-6](#) • [1 Corinthians 13:1-13](#) • [Luke 4:21-30](#)

MATH Smart

Good with numbers and/or logic, whether math, science, or engineering, according to [Diana Waring](#).

This is the ability to reason mathematically, discover abstract patterns, classify and organize, enjoy mathematical computations, and think logically. This person needs to see the logic and organization in what is being learned.

Text: **Luke 4:21-30**

21 Then he began to say to them, "Today this scripture has been fulfilled in your hearing." 22 All spoke well of him and were amazed at the gracious words that came from his mouth. They said, "Is not this Joseph's son?" 23 He said to them, "Doubtless you will quote to me this proverb, 'Doctor, cure yourself!' And you will say, 'Do here also in your hometown the things that we have heard you did at Capernaum.'" 24 And he said, "Truly I tell you, no prophet is accepted in the prophet's hometown. 25 But the truth is, there were many widows in Israel in the time of Elijah, when the heaven was shut up three years and six months, and there was a severe famine over all the land; 26 yet Elijah was sent to none of them except to a widow at Zarephath in Sidon. 27 There were also many lepers in Israel in the time of the prophet Elisha, and none of them was cleansed except Naaman the Syrian." 28 When they heard this, all in the synagogue were **filled with rage**. 29 They got up, drove him out of the town, and led him to the brow of the hill on which their town was built, so that they might hurl him off the cliff. 30 But he passed through the midst of them and went on his way.

Smarts	Images in the text/ interesting exegesis	Illustrations	SFX
MATH smart	The recalibrational theory [<i>Proceedings of the National Academy of Sciences</i>] of anger proposes that anger is produced by a neurocognitive program engineered by natural selection to use bargaining tactics to resolve conflicts of interest in favor of the angry individual.	Neurocognitive programs in social species have been designed by selection to solve the following computational adaptive problem: For a given choice set involving self and other, how much weight should be placed on the welfare of the other compared with the self?	<p>∈ the neurocognitive program in a formula</p> <p>WTR = welfare tradeoff ratio with i = self and j = individual</p> <p>WTR_{ij}</p> <p>In this story, there is a large imbalance between i and j which may explain</p>

	<p>Jerry Deffenbacher argues that we get angry when we appraise a situation as blameworthy, unjustified, punishable, etc.</p> <p>In this passage, the people in Nazareth react strongly to Jesus after he reminds them about God's mighty acts outside the boundaries of their ancestors. Mark Davis writes, "the word 'marvel' (θαυμάζω) in Luke has a long use and not every time is positive."</p>	<p>A study regarding kin selection [<i>Science Direct</i>] adds a layer of complexity in that a donor of aid will often weigh the cost to self in order to benefit a close relative. "Kin selection theory predicts that you should be more likely to undertake a risky rescue, such as saving a drowning person from an icy pond, if that person is a close genetic relative."</p> <p>From The Inquisitive Mind [<i>In Defense of Anger: An Evolutionary Necessity and its Contemporary Applicability</i>] "Societies confer a great deal of benefits onto their populations (e.g. safety, education, healthcare, etcetera), but to do so, that society must have a sense of order. Everything, from the hospital you were born in, to the school you attended, to the job you worked at, to the cemetery you will be buried in, requires order. It will therefore come as little surprise that maintaining order within society is very valuable. The theory is that we use anger to maintain order within our society to ensure future receipt of benefits."</p>	<p>the angry, violent outcome.</p>
--	---	--	------------------------------------

Text: 1 Corinthians 13:1-13

If I speak in the tongues of mortals and of angels, but do not have love, I am a noisy gong or a clanging cymbal. 2 And if I have prophetic powers, and understand all mysteries and all knowledge, and if I have all faith, so as to remove mountains, but do not have love, I am nothing. 3 If I give away all my possessions, and if I hand over my body so that I may boast, but do not have love, I gain nothing.

4 Love is patient; love is kind; love is not envious or boastful or arrogant 5 or rude. It does not insist on its own way; it is not irritable or resentful; 6 it does not rejoice in wrongdoing, but rejoices in the truth. 7 It bears all things, believes all things, hopes all things, endures all things.

8 Love never ends. But as for prophecies, they will come to an end; as for tongues, they will cease; as for knowledge, it will come to an end. 9 For we know only in part, and we prophesy only in part; 10 but when the complete comes, the partial will come to an end. 11 When I was a child, I spoke like a child, I thought like a child, I reasoned like a child; when I became an adult, I put an end to childish ways. 12 For now we see in a mirror, dimly, but then we will see face to face. Now I know only in part; then I will know fully, even as I have been fully known. 13 And now faith, hope, and love abide, these three; and the greatest of these is love.

Smarts	Images in the text/ interesting exegesis	Illustrations	SFX
<p>MATH smart</p>	<p>With slight adjustments to language, the engineering principles for building foundations can be adapted for the foundation for discipleship.</p>	<p>Love is the foundation of a life in Christ.</p> <p>All engineering structures are provided with foundations at the base to fulfill the following objectives and purposes;</p> <ul style="list-style-type: none"> → To distribute the load of the structure [<i>of living faithfully</i>] over a large bearing area so as to bring intensity of loading within the safe bearing capacity of the soil lying underneath. → To load the 	<p>Erect a pile construction made of faith, hope, and love.</p> <p>On the bottom layer, place several blocks (yoga blocks would work well) labeled LOVE. Arrange them on end and evenly spaced.</p> <p>Place one or two other blocks perpendicular to the first layer. They will rest on top of the first edge. Label these blocks HOPE and FAITH.</p> <p>Place on top of these a person! Or, something that has some weight to it that foundation will support.</p>

bearing surface at a uniform rate so as to prevent unequal settlement.

- To prevent the lateral movement of the supporting material.
- To secure a level and firm bed for building operations.
- To increase the stability of the structure as a whole.

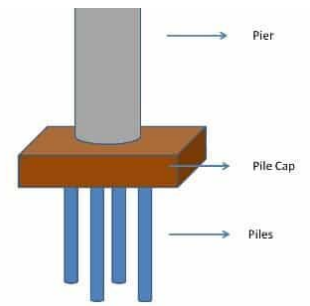


Fig.2: Pile Cap

Text: Psalm 71:1-6

- 1 In you, O Lord, I take refuge;
let me never be put to shame.
- 2 In your righteousness deliver me and rescue me;
incline your ear to me and save me.
- 3 Be to me a rock of refuge,
a strong fortress, to save me,
for you are my rock and my fortress.
- 4 Rescue me, O my God, from the hand of the wicked,
from the grasp of the unjust and cruel.
- 5 For you, O Lord, are my hope,
my trust, O Lord, from my youth.
- 6 Upon you I have leaned from my birth;
it was you who took me from my mother's womb.
My praise is continually of you.

Smarts	Images in the text/ interesting exegesis	Illustrations	SFX
MATH smart		Verses 1-3 made me think of storm cellars . Or safe rooms . Here is a design to build your own.	Find several boxes of graduating sizes. Label each of them with words from the Psalm: "Righteousness" "Refuge" "Deliverance" "Rescue" "Salvation" "Rock" Starting with the smallest one, define the word you have used to label it and add the next bigger box. Keep doing this until you have inserted all the boxes into one another. Knock the box off the table, toss it around, show it thrown about by experiences in our lives. Then, open each box, one by one, until you get to the first one. Open it and reveal the breakable object inside. Talk about how each layer of protection keeps the center safe.

Text: Jeremiah 1:4-10

4 Now the word of the Lord came to me saying,

5 “Before I formed you in the womb I knew you,
and before you were born I consecrated you;
I appointed you a prophet to the nations.”

6 Then I said, “Ah, Lord God! Truly I do not know how to speak, for I am only a boy.” 7 But the Lord said to me,

“Do not say, ‘I am only a boy’;
for you shall go to all to whom I send you,
and you shall speak whatever I command you.

8 Do not be afraid of them,
for I am with you to deliver you,
says the Lord.”

9 Then the Lord put out his hand and touched my mouth; and the Lord said to me,

“Now I have put my words in your mouth.

10 See, today I appoint you over nations and over kingdoms,
to pluck up and to pull down,
to destroy and to overthrow,
to build and to plant.”

Smarts	Images in the text/ interesting exegesis	Illustrations	SFX
MATH smart		Verse 5, 10 -- Blueprints - an important part of construction; it contains specifications, elevations, symbols, perspectives, units of measurement, and layout to name a few. The diagram is the building on paper. Code in a program! Electronics schematic! Each of these contains within it what is to be, whether it is a building or a program or a lighting	

		<p>system. Those who are trained to understand the symbols and functions will be able to “see” the end result. For Jeremiah, God has already seen who he will be long before the design process begins.</p>	
--	--	---	--